

**NASTAVITEV DOMOFONSKEGA
SISTEMA S PROGRAMOM
ConfigTool**

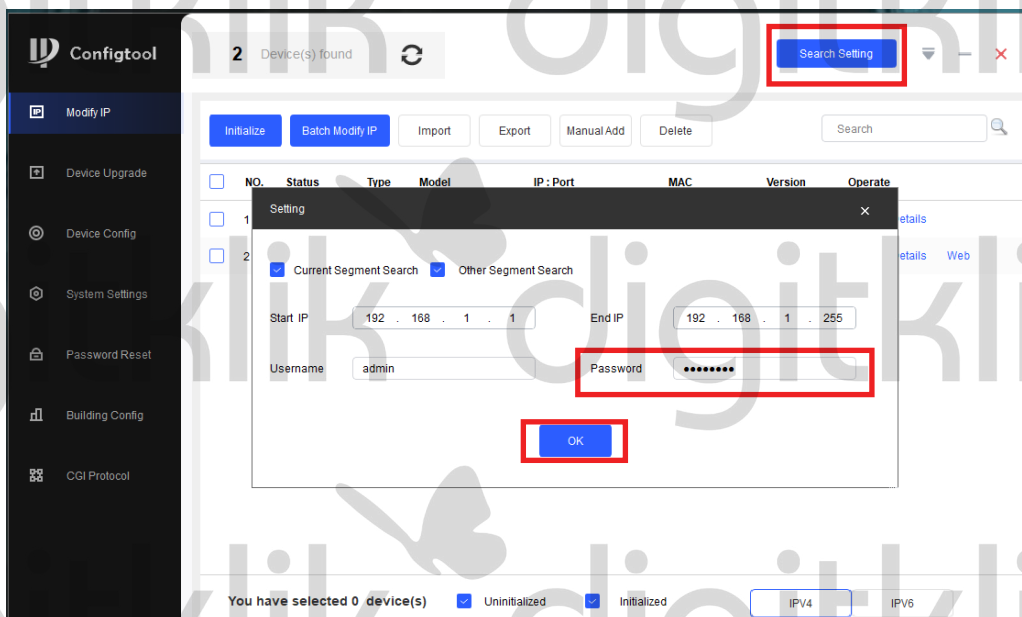
1. Nastavitev notranje enote

1.1. Na računalniku odprite program ConfigTool.

1.2. Kliknite na “Search Setting”, v zgornjem desnem kotu.

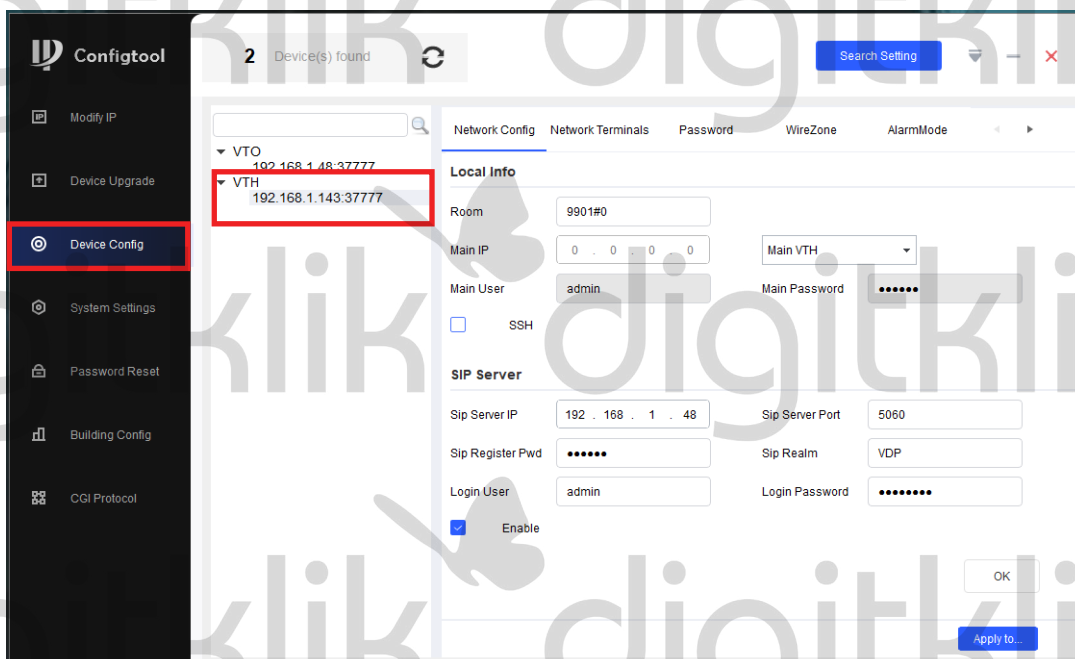
V polje “Password” vpišite geslo od notranje enote, ki ji želi spremeniti nastavitve.

Pritisnite gumb “OK”.



1.3. Na levi strani kliknite na podmeni “Device Config”.

1.4. Kliknite na “VTH”, da se izpišejo vse enote, ter dvakrat na hitro pritisnite na IP naslov.



1.5. Odprejo se nastavitve notranje enote.

V polja pravilno vpišite:

“Room” -> vpišite št. sobe: **9901#0**

Če imate samo eno notranjo enoto izpustite ta korak!

**V primeru, da imate več notranjih enot in želite, da vse enote zvonijo hkrati:*

- prvi dodatni notranji enoti vpišite **9901#1**,
- drugi dodatni notranji enoti vpišite **9901#2**,..

Spremenite opcijo “Main VTH” na “**Sub VTH**”

“Main IP” -> vpišite IP naslov glavne notranje enote

“Main User” -> admin

“Main Password” -> geslo glavne notranje enote

“Sip Server IP” -> IP naslov zunanje enote

“Sip Server Port” -> 5060

“Sip Register Pwd” -> 123456

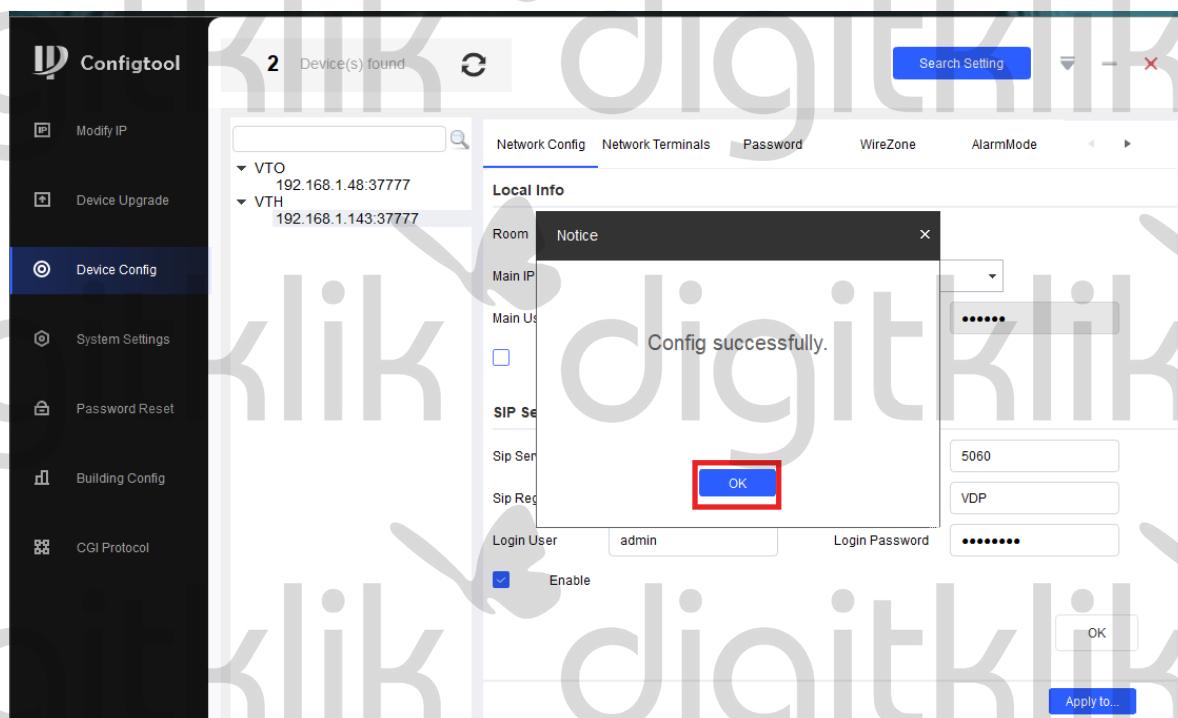
“Sip Realm” -> VDP

“Login User” -> admin

Vklopite funkcijo “Enable”, ter pritisnite gumb “OK”, da shranite nastavitvev.

The screenshot shows the Configtool interface for a device. The left sidebar contains navigation options: Modify IP, Device Upgrade, Device Config (selected), System Settings, Password Reset, Building Config, and CGI Protocol. The main area displays configuration for a device with IP 192.168.1.48. The 'Local Info' section has a red box around the 'Room' field containing '9901#0'. The 'SIP Server' section has a red box around the 'Sip Server IP' (192.168.1.48), 'Sip Server Port' (5060), 'Sip Register Pwd' (masked), 'Sip Realm' (VDP), 'Login User' (admin), and 'Login Password' (masked) fields. The 'Enable' checkbox is checked. An 'OK' button is visible at the bottom right.

1.6 . Pritisnite na gumb “OK”, da shranite nastavitvev.



1.7. Pritisnite na gumb “Network Terminals”.

V polja vpišite:

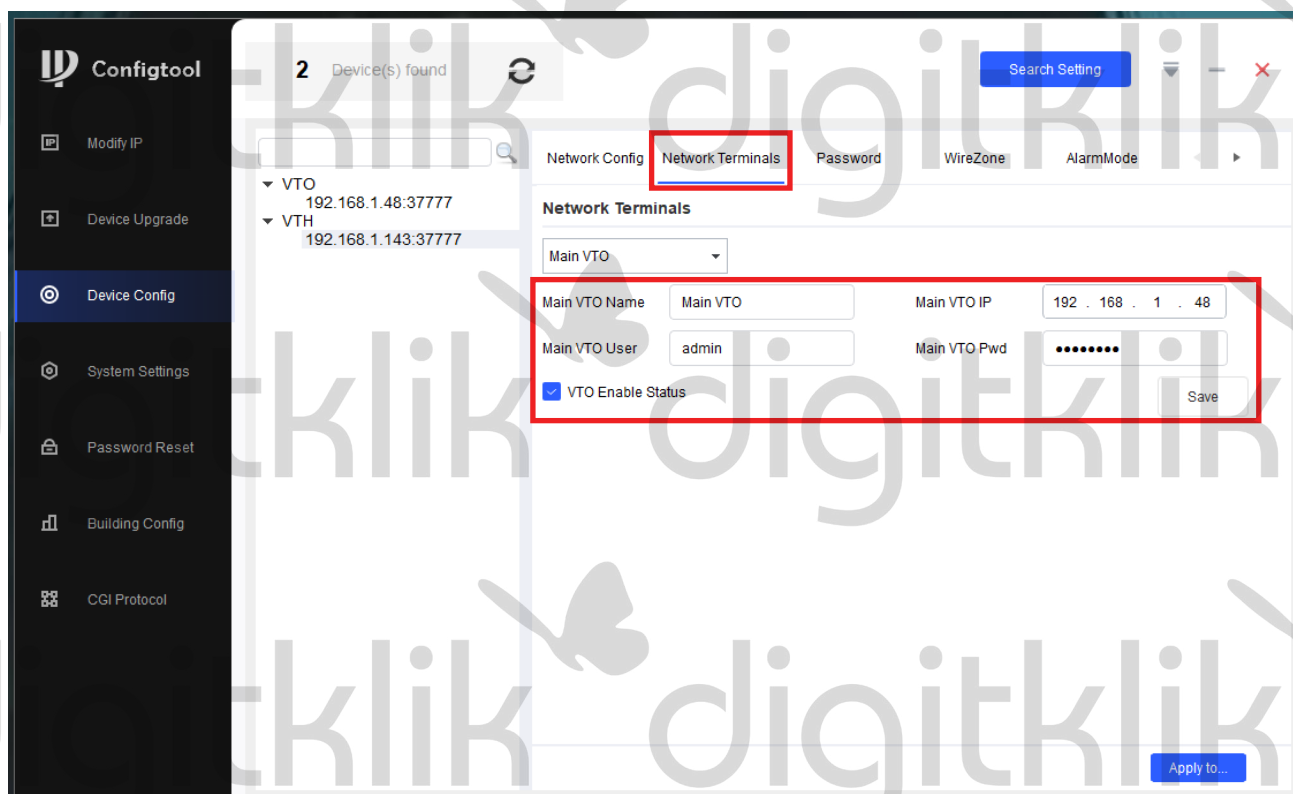
“Main VTO Name” -> poljubno ime za zunanjo enoto

“Main VTO IP” -> IP naslov glavne zunanje enote

“Main VTO User” -> admin

“Main VTO Pwd” -> geslo glavne zunanje enote

“VTO Enable Status” obkljukate in pritisnite gumb “Save”, da shranite nastavitve.

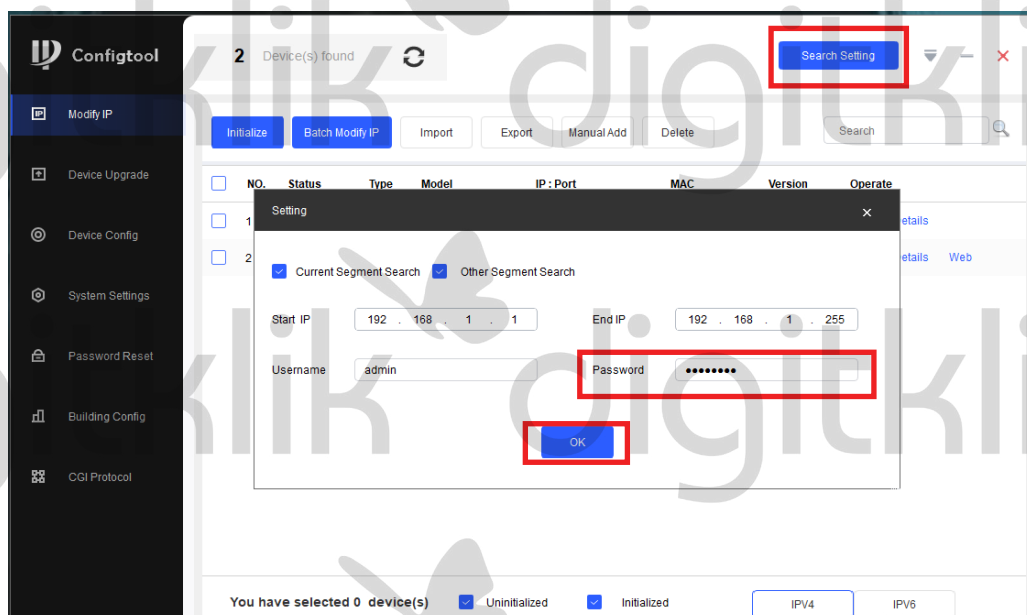


2. Nastavitev zunanje enote

2.1. Kliknite na “Search Setting”, v zgornjem desnem kotu.

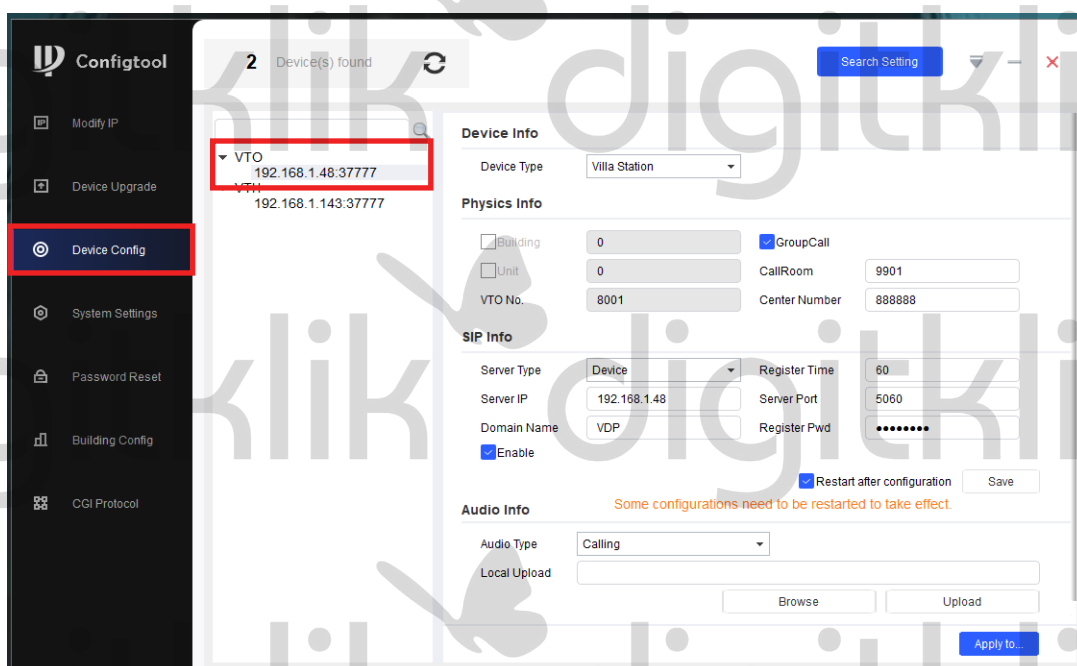
V polje “Password” vpišite geslo od zunanje enote, ki ji želi spremeniti nastavitve.

Pritisnite gumb “OK”.



2.2. Na levi strani kliknite na podmeni “Device Config”.

2.3. Kliknite na “VTO”, da se izpišejo vse enote, ter dvakrat na hitro pritisnite na IP naslov.



2.4. Pod "SIP Info":

V polja vpišite:

"Server Type" -> Device

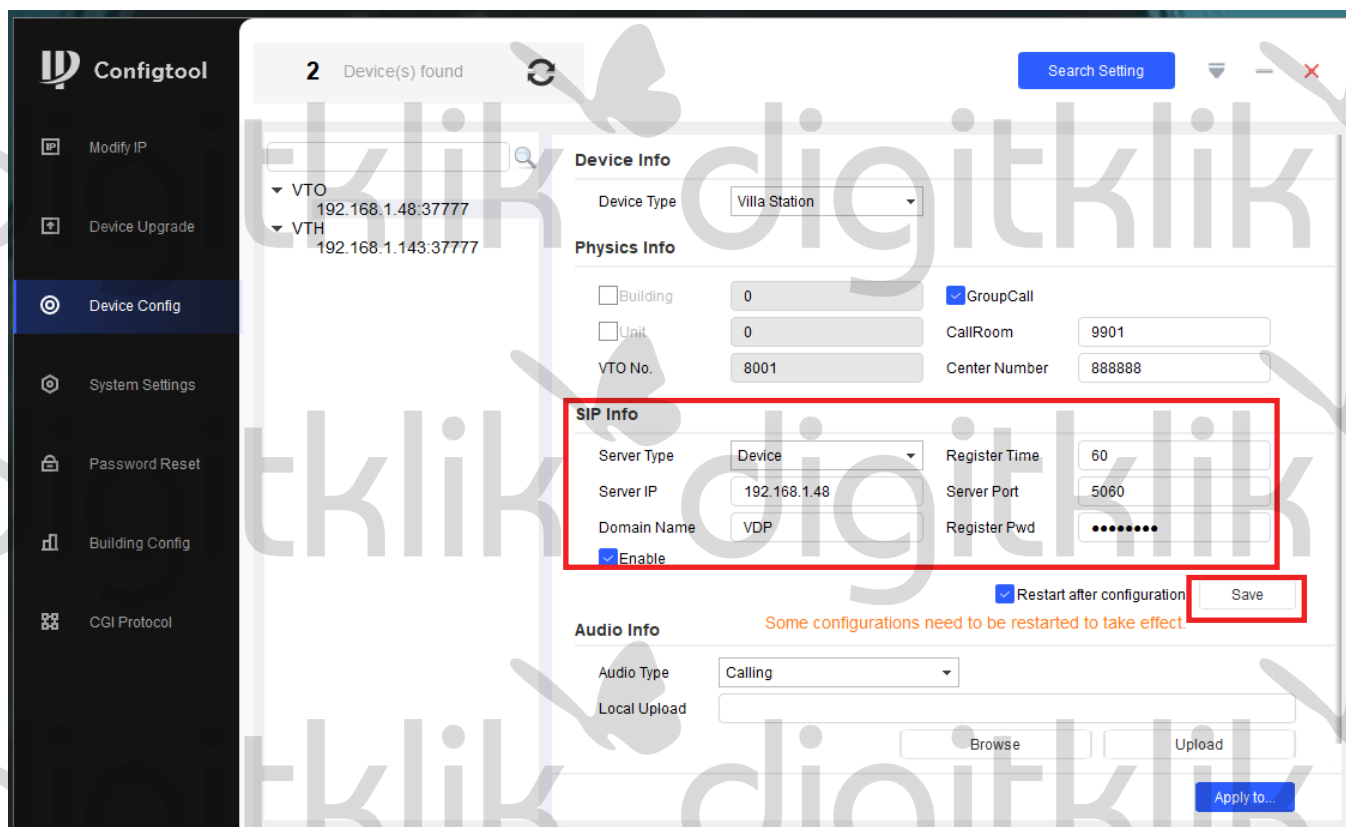
"Server IP" -> IP naslov zunanje enote

"Server Port" -> 5060

"Domain Name" -> VDP

"Register Pwd" -> geslo zunanje enote

"Enable" obkljukate in pritisnite gumb "Save", da shranite nastave.



The screenshot shows the Configtool interface for a device configuration. The left sidebar contains navigation options: Modify IP, Device Upgrade, Device Config (selected), System Settings, Password Reset, Building Config, and CGI Protocol. The main area displays configuration for two devices: VTO (192.168.1.48:3777) and VTH (192.168.1.143:3777). The 'SIP Info' section is highlighted with a red box and contains the following fields: Server Type (Device), Server IP (192.168.1.48), Domain Name (VDP), Register Time (60), Server Port (5060), Register Pwd (masked with dots), and an 'Enable' checkbox which is checked. Below the SIP Info section, there is a 'Restart after configuration' checkbox (checked) and a 'Save' button. The 'Audio Info' section below shows Audio Type (Calling) and a Local Upload field with 'Browse' and 'Upload' buttons. An 'Apply to...' button is at the bottom right.

2.5. Enota se bo izklopila in ponovno prižgala. Počakajte nekaj minut, ter preverite delovanje klica, pogleda ven, delovanje zvoka, odklep ključavnice,...